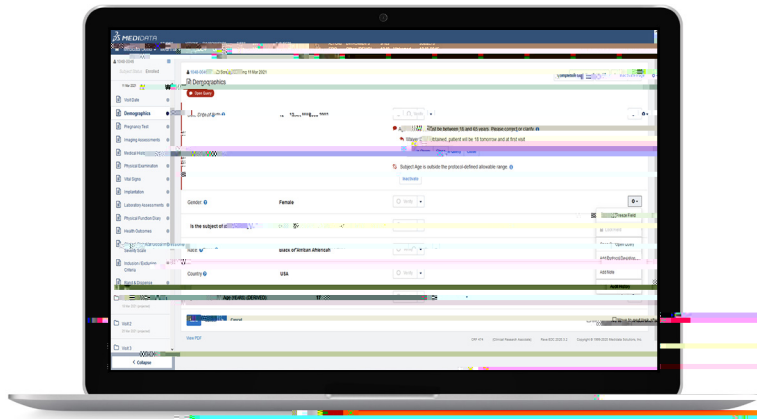


# Rave EDC

[Rave EDC](#) (Electronic Data Capture) is the most advanced and robust EDC system for capturing, managing, cleaning and reporting site-, patient- and lab-reported data. Rave EDC is the cornerstone of the [Medidata Clinical Cloud](#)<sup>®</sup> - our unified clinical research platform that streamlines workflows, eliminates the need for data reconciliation and delivers cross-functional and cross-study insights.



## Rave EDC Benefits

Rave EDC delivers many benefits to sponsors, CROs and sites including:

### Faster Study Start and DB Lock

- Global libraries enabling standardization and reuse across studies; and built-in field and form edit checks to reduce the need for custom functions
- Configurable and interactive implementation with (user acceptance testing) UAT performed as the study is built
- Studies can be locked with a single click, enabling analysis to start sooner

### Flexibility for Mid-Study Changes

- Protocol amendments and incremental changes are implemented with no system downtime. Medidata and our customers execute over 30,000 mid-study changes each year
- For adaptive trials, the management tool allows fine granular control over extensive study design changes, by configuring and testing the changes before deployment, with a full audit trail
- Multiple versions of a protocol are managed across subjects and sites based on IRB approvals etc. with the ability to move subjects from one version to another

### Improved Site Experience and Performance

- [Rave Companion](#) aids site users with quick and accurate completion of EDC forms using existing EHR (Electronic Health Record) data
- eLearning helps train sites efficiently, cost-effectively and compliantly with a set of localized, on-demand, online courses
- Site users have a single username and password for all studies
- Outstanding queries can be easily viewed and actioned in the EDC Tasks list

