



A

D

C

D

F

M

:

















DATA

9 1 2 3 4 5 6 7 8 9 10 11 12





**Biopharmaceutical and CROs expect domain expertise**

D ( F 2), C

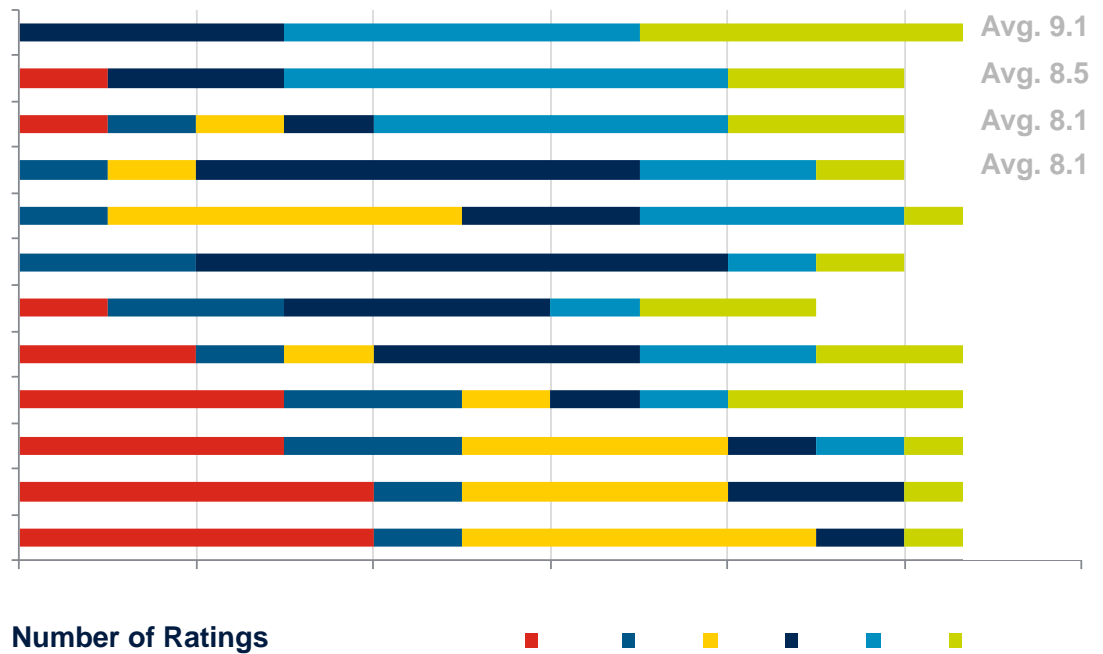
**CRO software tends to trail in capability depth**

C C C C C C

**Uni ed means uni ed**

C A F 2, F 2 C (.,

**Figure 2: Most important proof points for respondents**







, .7456 ( )1 10 ( ( )646430.7690.09 ( )2 )15( )10( )10  
 C ID-19  
 C 5 5 ( 5 ( -5( )4769 ID-19 ) )5  
 ID-19





A ,D. .M&A:F I .M 20,2020. ' A .A : :// .

C ,C.A D ( )5 20, ( )5 - -B C (( A)5( )5C( )5( )10 19( )5( )5( )65( )5( :/0.368 0.62 /

C M (A)5 C I 5( 910( )A )-418 ( )5( 6510( )2 ) 0 00 ( )118( )5( )65( )5( :/0.368

Multiple horizontal blue lines for text entry.